



## Swannanoa Preschool

# Swannanoa Preschool Newsletter - June, 2020

### UPCOMING EVENTS;

Wednesday 3rd June - Bike Day

Thursday 18th June - PJ Day

### CONGRATULATIONS;

### THANK YOU;

Marjorie Hicks for donation of clothes to Whakanui and Manaaki.

Lorraine MacDonald for donation of clothes to Atawhai.

Philippa Saxton for donation of clothes.

### REMINDERS;

Please also remember to bring along your child's wet bag each day.

### COVID-19 REMINDERS:

The symptoms of COVID-19 are similar to common illnesses such as a cold or influenza. You may have one or more of the following:

- a cough
- a high temperature (at least 38 °C)
- shortness of breath
- a sore throat
- sneezing and runny nose
- temporary loss of smell.

Shortness of breath is a sign of possible pneumonia and requires immediate medical attention.

Symptoms can take up to 14 days to show after a person has been infected. The virus can be passed onto others before they know they have it – from up to two days before symptoms develop.

If you have these symptoms call Healthline (for free) on [0800 358 5453](tel:08003585453) or your doctor immediately.

If tamariki or adults are suffering from general illnesses ie hand, foot and mouth, ringworm, slapped cheek, headlice, conjunctivitis, etc they will be asked not to attend preschool until condition has been treated. **Anyone suffering from vomiting or diarrhoea must not attend preschool until 48 hours after last symptoms.**

---



## Welcome back!!

It's fantastic to see everyone back at Preschool

It really has been a strange old time hasn't it!

We are so happy to be back and welcoming our tamariki and all of you back in centre and starting to re-establish our routines.

In all reality its like we have never been away - everyone has settled so well, re-connected with their friends and the

Preschool is looking well lived in again!

A big thank you to everyone for following our new routines, just a couple of extra minutes in the morning to capture the info we need! And I'm enjoying the extra opportunity to chat!! Although it has been chilly in the car-park! Hopefully not for too much longer.

If you have any feedback around this please let us know :)

Following on from the lockdown if your circumstances have changed, please feel free to come and see me for a chat to see what we can do to help you through these times. Please don't hesitate to do this, we are a community based preschool and we are here for you.

\*\*\*\*\*

#### **Staffing:**

Our lovely Anna, who works our lunchtime shift in Atawhai, is off to pastures new. She is going to be working closer to home.

We are very sad to see Anna go and will miss her cheery face and beautiful singing voice!!

Anna will be finishing with us next Friday 5th June.

All the best Anna x

\*\*\*\*\*

#### **Building Works:**

Our Architect has been quietly working away during lockdown and we are almost ready for consent stage.

A quick re-cap: We are extending the space between the nursery areas to bring them back together and create the most amazing environment. This new space will have great connections to Atawhai and Manaaki enhancing our transition processes and enhancing our vision of One Centre, One Team even more.

We just can't wait!

\*\*\*\*\*

#### **Facebook:**

Do you follow us on Facebook? A great place to keep an eye on updates and visitors. You will also be seeing regular posts of the amazing learning that happens here at Preschool.

***We currently have a few spaces available so if you are thinking you would like extra days please let me know.***

\*\*\*\*\*

I am in the office Monday to Thursday, you are welcome to drop in and see me at anytime.

**Nga mihi nui**

**Jo Dobson**

**Centre Manager**

*Whangia ka tupu, ka puawai,*

*That which is nurtured, blossoms and grows*

---



## Manaaki News

Welcome back everyone. It is fantastic to see everyone back at Preschool. Even though drop off and pick up is a little different, everyone has settled back in extremely well – thank you for supporting us with this change. All of the children are extremely happy to be back and seeing their friends.

As all the children are transitioning back into Preschool, we have set our Group planning focus for this term as 'Supporting the Well Being of all Children as they Transition back into Preschool'.

Ways in which we will be supporting this is by

-providing a positive climate/environment that feels safe, respectful, welcoming and supportive.

-providing all children with opportunity to share their experiences and understanding from lockdown.

-created a display of photos that you shared with us during lockdown, which the children are enjoying talking about.

A very big welcome to the new children and families that have started in Manaaki, we all look forward to getting to know you and following your learning journey. Please speak to any staff member if you have any concerns or just for a chat.

With the cooler weather upon us, please remember to bring in named jackets and hats. We will be continuing to head outside to play and want all the children to be nice and warm.

Thank you to Karen who has kindly made and donated some fairy doors, sea life blocks and cars – the children are loving these.

We look forward to a fun month ahead, as we make new discoveries, new friendships, challenge ourselves, revisiting prior learning and lots of fun playing.

The Manaaki Team

---



## Whakanui & Puawai News

Our nursery tamariki have really enjoyed coming back and have settled in happy and excited for the day.

A lot of the day is spent pottering and becoming familiar with the environment again as well as enjoying time with each other and reconnecting.

We love having the nursery humming again with busy sounds of exploring and being together for songs and stories we all enjoy. It's getting cold and frosty so if you could make sure there are hats/jackets and plenty of changes of clothes for your busy explorer that would be really helpful!

We have noticed the tamariki have really enjoyed challenging themselves physically outside and we will be focusing on this interest over the next few months; keep an eye out for some interesting experiences! We will make sure

we share these with you along the way. So glad to have you all back and to be together again!

*He waka eke noa- We are all in this together*

*-Whakanui and Puawai Kaiako*

Ngā mihi nui,



## Enviroschools News

Kia-ora everyone - so lovely to be back, we are planning to move our kai swap stand this term – so keep an eye out to see where that pops up!

Also a friendly reminder, as we are a green gold Enviroschools, we strive to reduce our preschool waste, one way you can help with this is with a rubbish free lunchbox. Some ways to achieve this is through using beeswax wraps to wrap food, using containers or a bento style lunchbox. Food scraps from lunchboxes are fed to our worm farms or go home with teachers to feed their pigs and chickens. We wash and recycle yoghurt containers and all other rubbish will be sent home in your child's lunchbox. If you are stuck for ideas there is always heaps online to help you! We appreciate your efforts in helping us out with this.

Brooke, Jan, Jo & Laura

---



## Atawhai News

Welcome back everyone! It has been so great to see all of your lovely smiling faces – we have missed them!

Everyone has done such a great job with settling back into life at preschool – it's almost as if we were never away.

For the next few weeks we are going to be focusing on making sure that everyone feels settled, has gained that sense of belonging again, and establishing where new interests and learning focuses lie.

We have also created a display to share memories from time at home in our bubbles so if you have any photos you'd like to share then send them through to your child's key teacher.

It's definitely starting to cool down a bit now – especially in the mornings so please make sure that your child has a named jacket and hat to keep them warm – layers are a good idea as children can take them off when they start to warm up.

It's great to be back and we look forward to continuing to share all our learning with you!

The Atawhai team

---



## Transition to School

Welcome back! It's so great to see everyone's smiley faces.

Happy Birthday to those who have turned five and those who are turning five.

Kerry and Jess are in the process of contacting schools to check in on school visits and how they would like to proceed with these, we will keep you posted.

If you have any questions please see either Jess in Atawhai or Kerry in Manaaki and we are happy to help in any way we can.



## Whanau Partnership

Welcome back to preschool everyone! I hope that you have all managed to settle into a bit more of a new routine over the last couple of weeks as you juggle school and preschool drop offs.

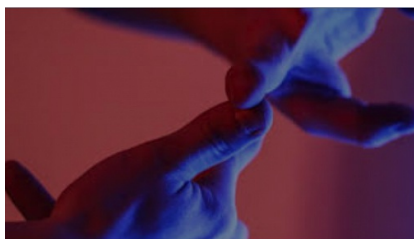
The children have all settled back into life at Swannanoa preschool really well which is great for everyone!

It's a testament not only to the relationships we have with the children, but also to you – to our families. You have kept consistency, you have kept life normal at home, you have done an amazing job!

We are going to be focusing on re-settling the children along with their families for the next little while, so if you have any questions or would like any help in certain areas then please let us know – we are happy to help any way we can

Chauntelle, Tash & Sam

---



## New Zealand Sign Language

Welcome back everyone!

We hope you enjoyed the NZSL content we shared over the lockdown period. It has been so rewarding hearing your tamariki sharing their knowledge of NZSL with their whānau.

Have a wee look through our Facebook page to see some

great singing and signing.

### **Te whariki - our early childhood curriculum states that:**

Increasingly, children are likely to be learning in and through more than one language. Besides English, te reo Maori and New Zealand Sign Language (NZSL) some 200 different languages are in use in New Zealand, with Samoan, Hindi, Northern Chinese, French and Yue (Cantonese) being the most common. Children more readily become bi- or multilingual and bi- or multiliterate when language learning in the education setting builds on their home languages.

It is desirable that children in ECE settings should also have the opportunity to learn NZSL, an official language of New Zealand, and to learn about Deaf culture. For some children, NZSL is their first language, and services have a responsibility to support its use and development.

We are loving developing our skills and sharing these with our tamariki.

Courtney, Brooke & Jan

---



## Bicultural News

**Waiho i te toipoto, Kaua i te toiroa** Let Us Keep Close Together, Not Wide Apart

The months over lockdown has brought to the fore the importance of our relationships with our centre whānau, it's so good to be back at preschool.

Courtney, Ashlee and Jo have recommenced with their Te Reo Māori course '**Te Ahu o Te Reo Māori**', this involves deepening their knowledge of the Ngāi Tahu language and culture.

It also includes; Local context/history/introduction, Te Reo Māori in NZ, Ngāi Tahu, Whakawhanaungatanga (relationships), Mihi, greetings, basic conversation, Māori language resources, Language planning, learning outcomes - Its full on!

### **Matariki:**

Our matariki celebrations will look a little different this year, we will celebrate Matariki throughout the week of the 28th June, and will include activities such as weaving, vegetable planting, ancestral stories, and lots of waiata of course!

Our Bicultural Leadership Group are in the process of revising our 'Vision and Action Plan'. Feel free to share any ideas or aspirations you have for this with one of our Bilcultural leaders.

Kapahaka will recommence at Level 1 - we can't wait!

Ngā mihi nui whānau,

Your Bicultural Leadership Team

Courtney, Jo, Ashlee, Katrina J and Laura